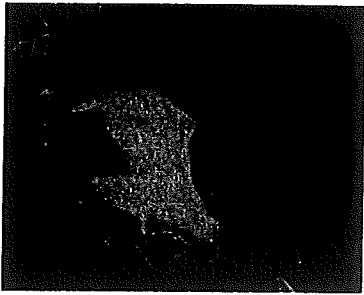


COTE RANCH OPEN HORSE SHOW

DOUBLE JUDGED SHOW



Date: **May 23, 2010**

Time: **8:30**

Directions: I 90 to Sparta exit # 28 to Hwy 16. Go east 6 miles to County A. Turn Right and follow signs to grounds on right.

Fire Number: **15895 County A**

Judge: Mark Radloff & Jody Engelhardt

Show Held Rain or Shine
--Indoor arena available--

WWHSA APPROVED
WSHC APPROVED

Call Jeanie Cote for more information (608) 797-1326

Weanling & Yearling Halter
2 & 3 yr Old Halter
4 & over Halter
Paint/Appaloosa Halter
AQHA Halter
Grand & Reserve
Tiny Tot Showmanship

7. Youth Showmanship
8. Jr Showmanship
9. Sr Showmanship
10. Select Showmanship
11. Leadline (age 6 & under)
12. Tiny Tot W/T

Food stand on grounds

All dogs must be on leash

Current Coggins copy required

Age levels

Jr Horse = 5 <
TT = 10 & under
Youth = 13 & under
Jr = 14-18
Sr = 19-39
Select = 40 +

Entry Fees

All classes = \$10
(\$5 per judge per class)

Ribbons & payback for 8 or more entries

1st - \$7
2nd - \$5
3rd - \$3

Hi Point Versatility Horse



*****30 Minute Warm Up Break*****

- | | |
|--------------------------------|----------------------------------|
| 1. OPEN W/T English or Western | 28. Select W/T |
| 2. Open English W/T | 29. Youth Western Pleasure |
| 3. Open English Pleasure | 30. Open Western Pleasure |
| 4. Novice English Pleasure | 31. Jr Western Pleasure |
| 5. Youth English Pleasure | 32. Sr Western Pleasure |
| 6. Jr English Pleasure | 33. Select Western Pleasure |
| 7. Sr English Pleasure | 34. Novice Western Pleasure |
| 8. Select English Pleasure | 35. Solid Color Western Pleasure |
| 9. Open English Equitation | 36. Paint/App Western Pleasure |
| 10. Open WWHSA W/T | * Championship Pleasure |
| | 37. Discipline Rail |
| 11. 2 & 3 Y/O W/T | 38. Open Western Horsemanship |
| 12. Jr Horse W/T | |
| 13. Jr Horse Pleasure | |
| 14. Horses 6 & Over W/T | |
| 15. Open Western W/T | |

Not responsible for any injury, damage or theft on property